

Whaler's Cove Assisted Living
 114 Riverside Avenue
 New Bedford, MA 02746



April Birthdays

In astrology, those born April 1–20 are Aries, the Ram. Rams are adventurous go-getters and full of enthusiasm, charm, and energy. Those born April 20–30 have the star sign of the Bull of Taurus. Bulls show steady, dogged persistence in achieving their goals and enjoy being rewarded for that.

- Marlon Brando – April 3, 1924
- Spencer Tracy – April 5, 1900
- Walter Winchell – April 7, 1897
- Jackie Chan – April 7, 1954
- Charles Wilson Peale – April 15, 1741
- Paloma Picasso – April 19, 1949
- Shirley Temple – April 23, 1928
- Carol Burnett – April 26, 1933
- Jerry Seinfeld – April 29, 1954



Happy Birthday to Our Residents....

Dennis O	April 1 st
Louise D.	April 4 th
Gordon W.	April 8 th
Antone F.	April 11 th
Helena F.	April 14 th
Dalia R.	April 15 th
John V.	April 15 th
Jose P.	April 20 th
Joyce M.	April 24 th
Margaret M.	April 24 th



April 2025



Whaler's Cove Assisted Living The Port of Call

114 Riverside Avenue
 New Bedford, MA 02746
 P: 508-997-2880 F: 508-997-1599

Easter Celebrations

Spring is here, bringing with it the joy and renewal of the Easter season! At Whaler's Cove, we're excited to celebrate with a mix of meaningful traditions and fun-filled activities. Whether you're looking for moments of reflection, creative crafts, or entertainment, there's something for everyone to enjoy. Join us as we embrace the spirit of Easter with friends, laughter, and community!

Friday, April 11

- **Easter Bunny Lollipop Craft** (2:00 PM, C.K.) – Create festive treats for the season!

Sunday, April 13 (Palm Sunday)

- **Plans for Palm Sunday are in the works!** Activity Coordinator **Sarah Achorn** will keep residents updated as details are finalized. Stay tuned!
- **Movie Night: Easter Special** (6:30 PM, M.T.) – Relax with a holiday-themed film.

Thursday, April 17

- **Stations of the Cross with the Legion of Mary** (2:00 PM, R.R.) – A time for reflection and prayer.

Friday, April 18

- **Easter Bunny Craft** (2:00 PM, C.K.) – Get creative with a fun holiday project!

Saturday, April 19

- **Catholic Mass** (10:00 AM, R.R.) – Join us for a morning service.

Sunday, April 20 (Easter Sunday)

Monday, April 21

- **Photos with the Easter Bunny** (1:30 PM, G) – Capture the holiday spirit!

Let's make this Easter season one to remember—filled with laughter, love, and celebration! Be sure to check out the monthly calendar for even more exciting activities throughout April. 🐰🌸

Stress Awareness Month

Jazz Appreciation Month

Golden Rule Week
April 1–7

Passover
April 12–20

Metric System Day
April 7

Easter
April 20

Earth Day
April 22

DNA Day
April 25

Hug an Australian Day
April 26

Partner Spotlight: Back Nine Nurses

At Whaler's Cove, we are always looking for ways to enhance the support available to our residents. Back Nine Nurses provide an extra layer of care, ensuring residents receive the attention and advocacy they need beyond what is traditionally offered in assisted living.

As experienced Registered Nurses and Certified Care Managers, they assist with hospital transitions, accompany residents to medical appointments, reconcile medications, and provide 24/7 emergency advocacy. Their services offer peace of mind for families, especially those who may live out of state or have demanding schedules. By working closely with our team, they help streamline communication and care coordination for the best possible resident experience.

For more information or to inquire about pricing, call 508-737-4277 or visit backninenurses.com.



Celebrating Administrative Professionals Day

Every year on Administrative Professionals Day, we take a moment to recognize the dedicated individuals who keep our assisted living community running smoothly. Their hard work, attention to detail, and unwavering commitment to residents, families, and staff make an immeasurable impact on our daily operations.

Administrative professionals in assisted living wear many hats. From greeting visitors with a warm smile to handling vital paperwork, scheduling, and coordinating resident services, they ensure everything runs seamlessly behind the scenes. Their roles go beyond clerical duties; they create a welcoming environment that makes residents feel at home and families feel confident in the care their loved ones receive.

The fast-paced nature of assisted living requires a unique blend of efficiency, compassion, and problem-solving skills. Administrative professionals are often the first point of contact for families seeking information about our community. Their ability to provide clear, supportive communication helps guide families through what can sometimes be an emotional transition. Their organizational expertise ensures that operations continue without disruption, allowing caregivers and healthcare staff to focus on providing top-notch care.

On this special day, we extend our heartfelt appreciation to the administrative team at Whaler's Cove Assisted Living. Your dedication does not go unnoticed. Whether it's managing daily logistics, supporting staff, or making residents feel valued, your contributions shape the culture of our community in meaningful ways.



Preparing for the Season Switch to Air Conditioning

As we transition from heating to air conditioning sometime after May, we want to ensure everyone remains comfortable during this seasonal change. With our one-pipe heating and cooling system, the timing of this switch depends on the weather, and we appreciate your patience during this process.

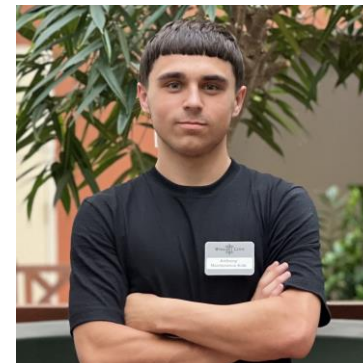
Per Massachusetts regulations, indoor temperatures must be at least 64°F at night and 68°F during the day from September 15 to May 31, with a maximum indoor temperature of 78°F. Because these guidelines determine the heating season, the air conditioning will be turned on after May 31 or when consistently warm temperatures allow for a smooth transition. We appreciate your understanding as we follow these state requirements.

To stay comfortable as temperatures fluctuate, we recommend using fans to help circulate air and adjusting window blinds to block out excess heat. Lightweight, breathable fabrics for bedding and clothing can also make a difference in maintaining a comfortable environment. If additional cooling is needed, purchasing portable cooling devices may be an option to help manage individual preferences.

Your comfort and well-being remain our top priority, and we appreciate your cooperation as we make this seasonal adjustment.



Employee of the Month



We are thrilled to recognize Anthony Silvia as Whaler's Cove Assisted Living's Employee of the Month!

As our dedicated Maintenance Assistant, Anthony plays a crucial role in keeping our community safe, clean, and well-maintained. From routine maintenance and repairs to painting apartments and common areas, his hard work ensures our residents enjoy a comfortable living environment. He is always ready to tackle unscheduled maintenance tasks, keep our grounds in top shape, and assist with setting up for events and activities.

Recently, Anthony has been instrumental in our community renovations, working closely with his team to enhance and refresh our spaces. In addition to his maintenance duties, he has stepped up to assist with resident transportation for medical appointments and outings, ensuring everyone gets where they need to go safely.

Anthony's reliability, quick learning, and approachable nature make him a valued team member. Whether responding to building emergencies or simply lending a hand wherever needed, he consistently goes above and beyond.

Thank you, Anthony, for your dedication and hard work—you are truly an asset to Whaler's Cove!

